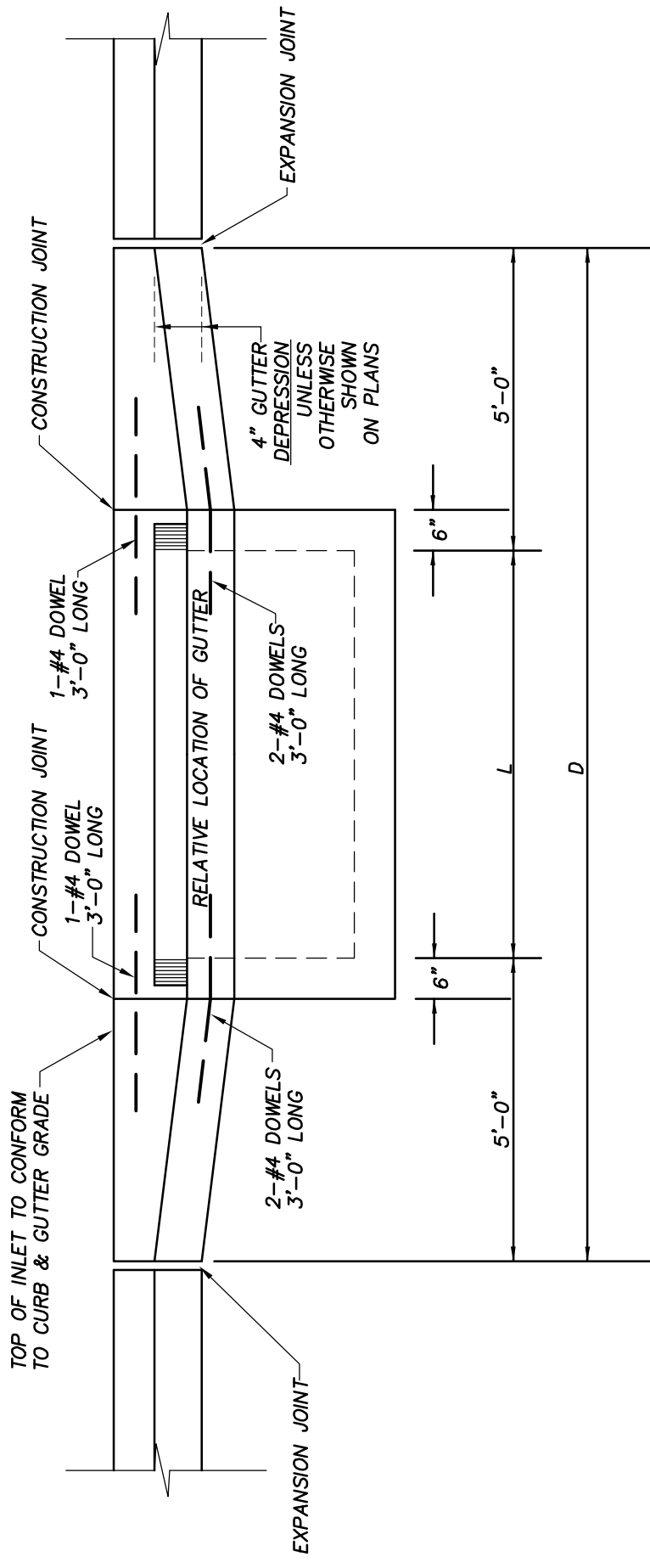
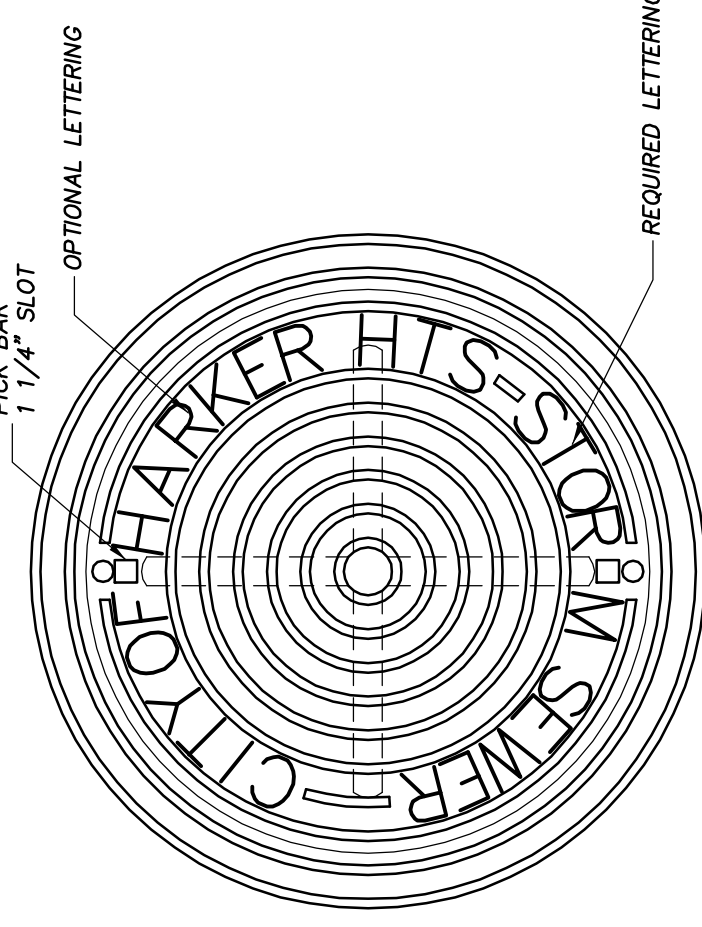


TYPICAL CURB INLET
NTS

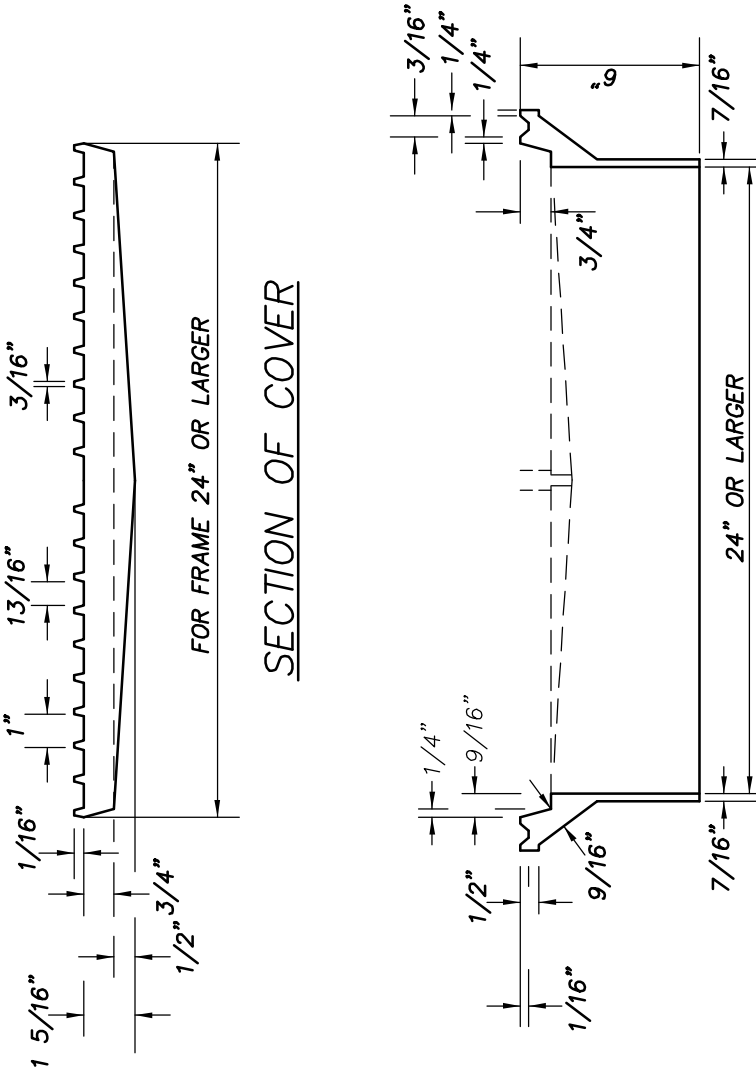
INLET TYPE	D	L
TYPE-A	15'-0"	5'-0"
TYPE-B	20'-0"	10'-0"
TYPE-C	25'-0"	15'-0"
TYPE-D	30'-0"	20'-0"



ELEVATION SHOWING RELATIVE ELEVATION OF GUTTER
NTS

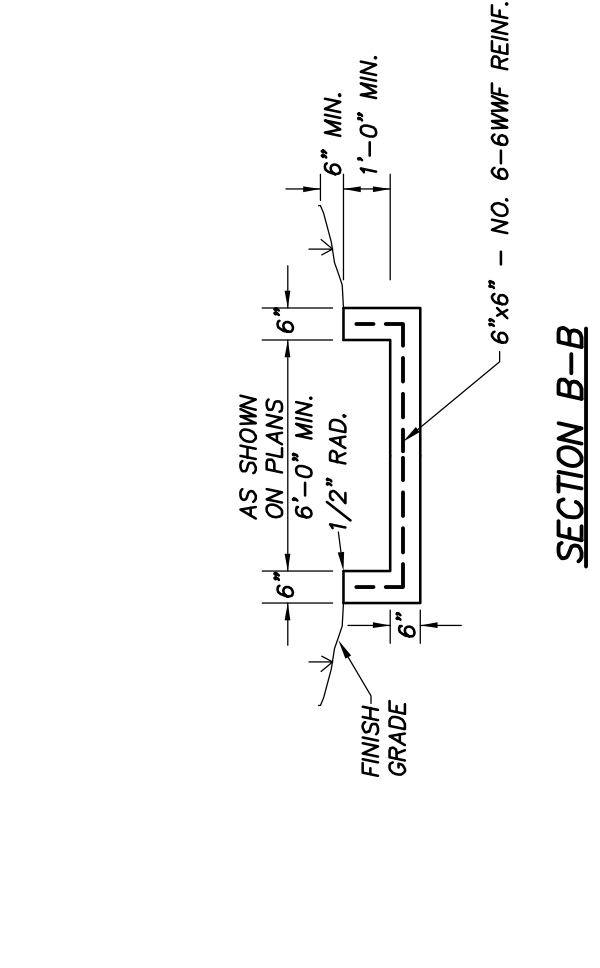


PLAN OF COVER

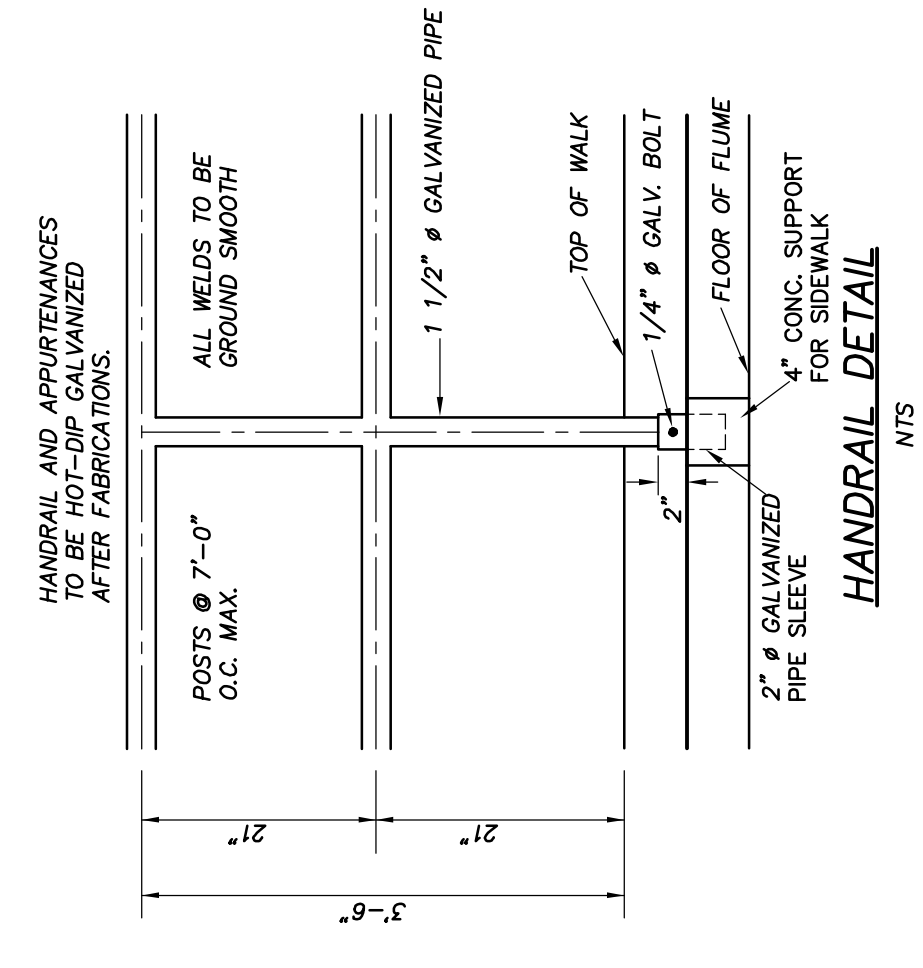


SECTION OF FRAME

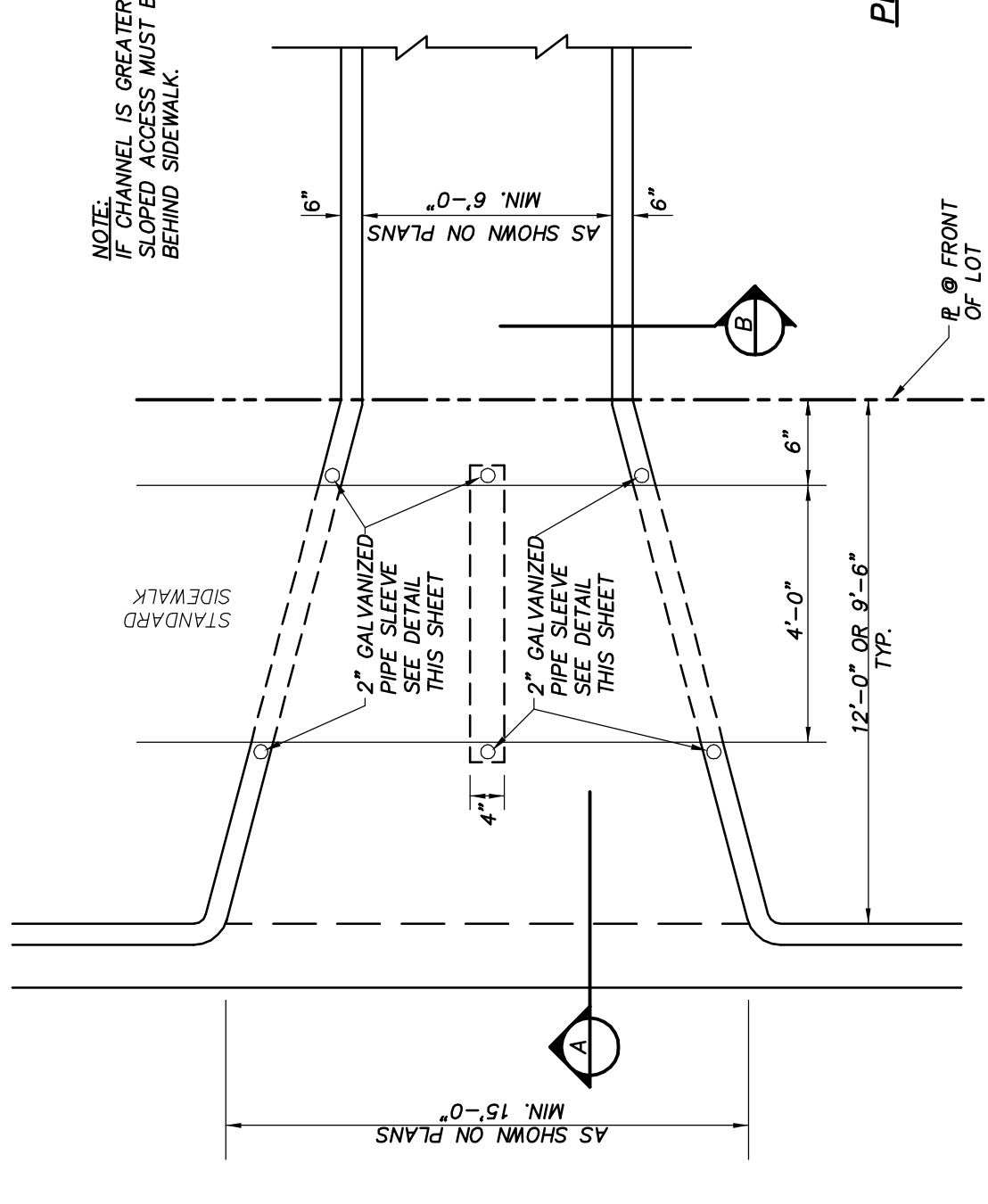
STANDARD MANHOLE FRAME & COVER
NTS



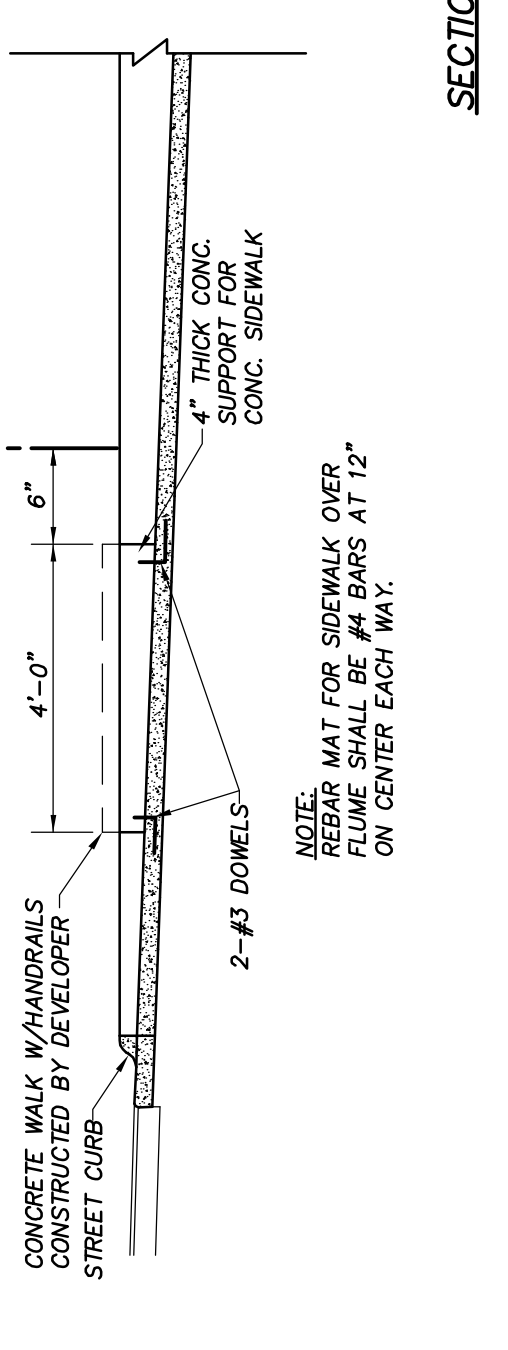
SECTION B-B
NTS



HANDRAIL DETAIL
NTS

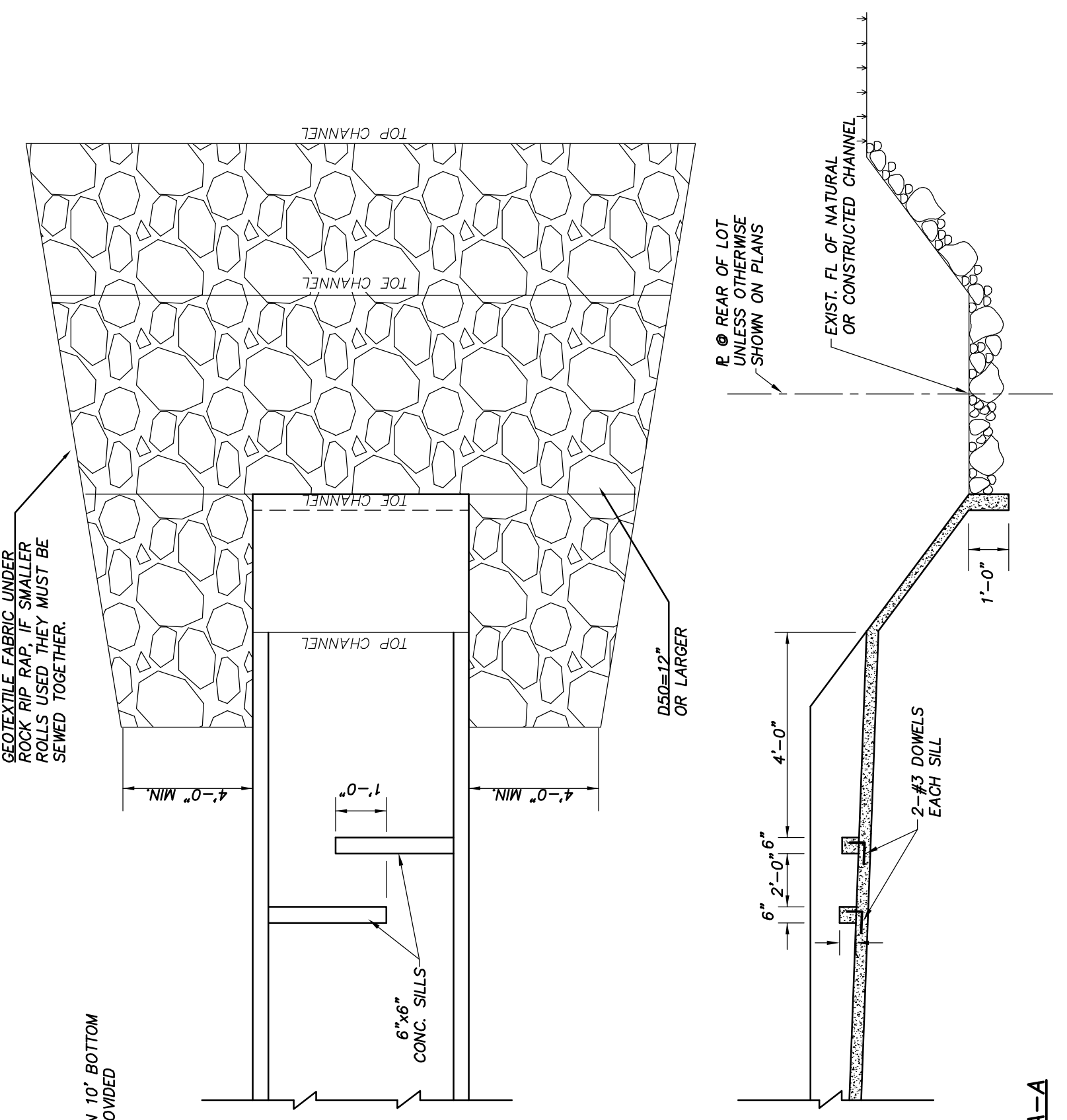


PLAN

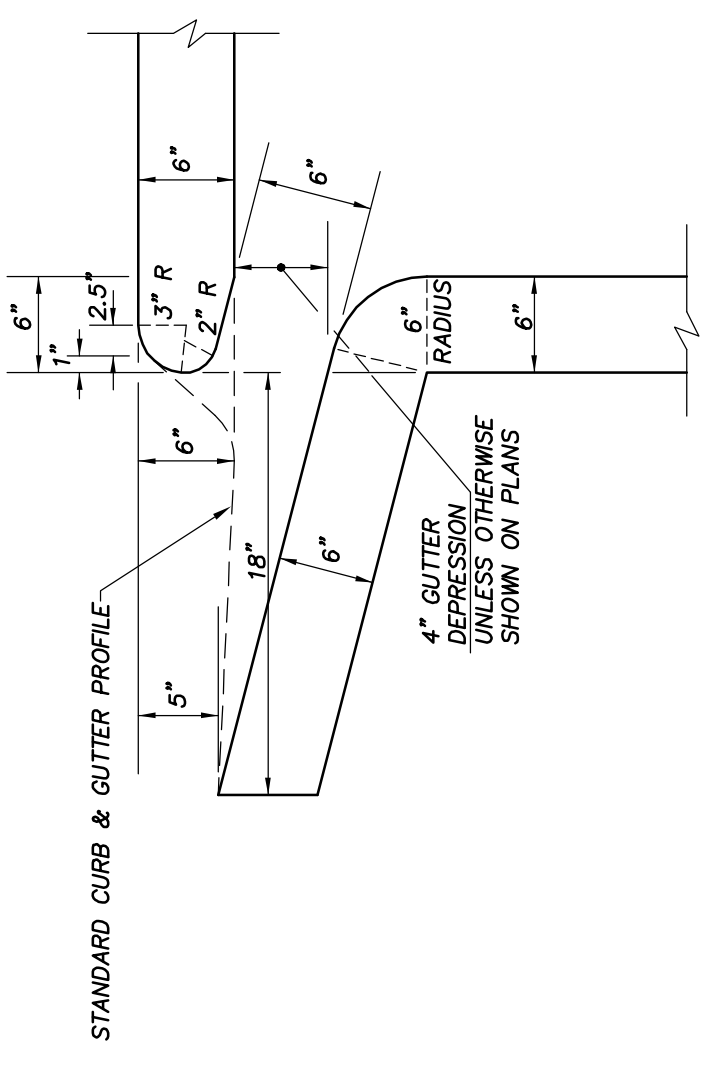


SECTION A-A

CONCRETE DRAINAGE FLUME
NTS



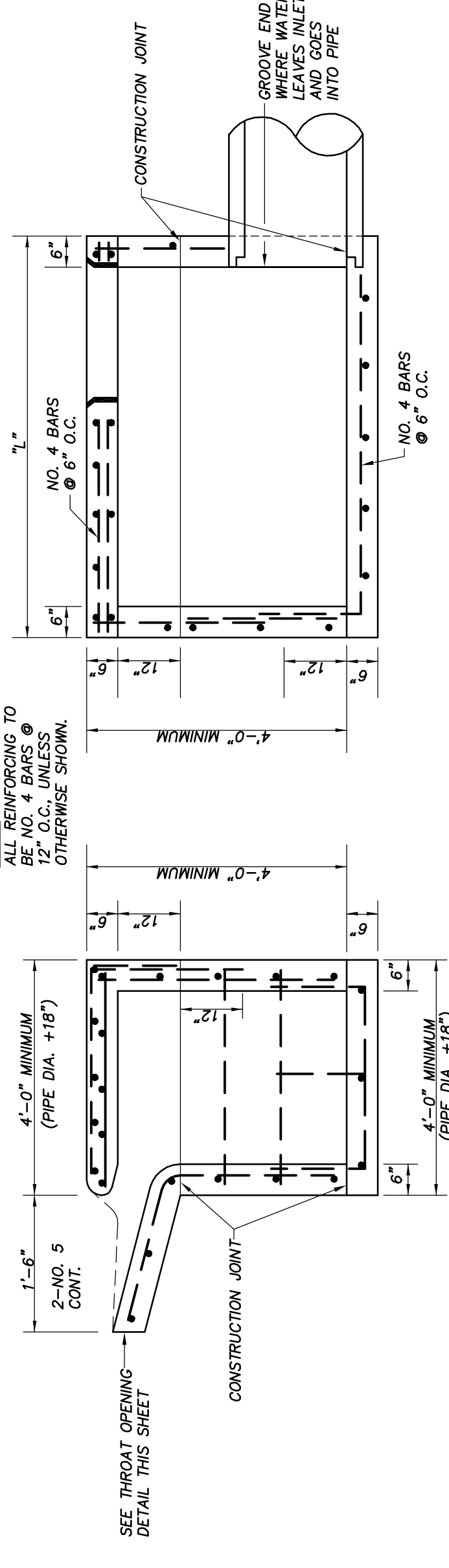
DETAIL AT INLET THROAT OPENING
NTS



STANDARD CURB & GUTTER PROFILE

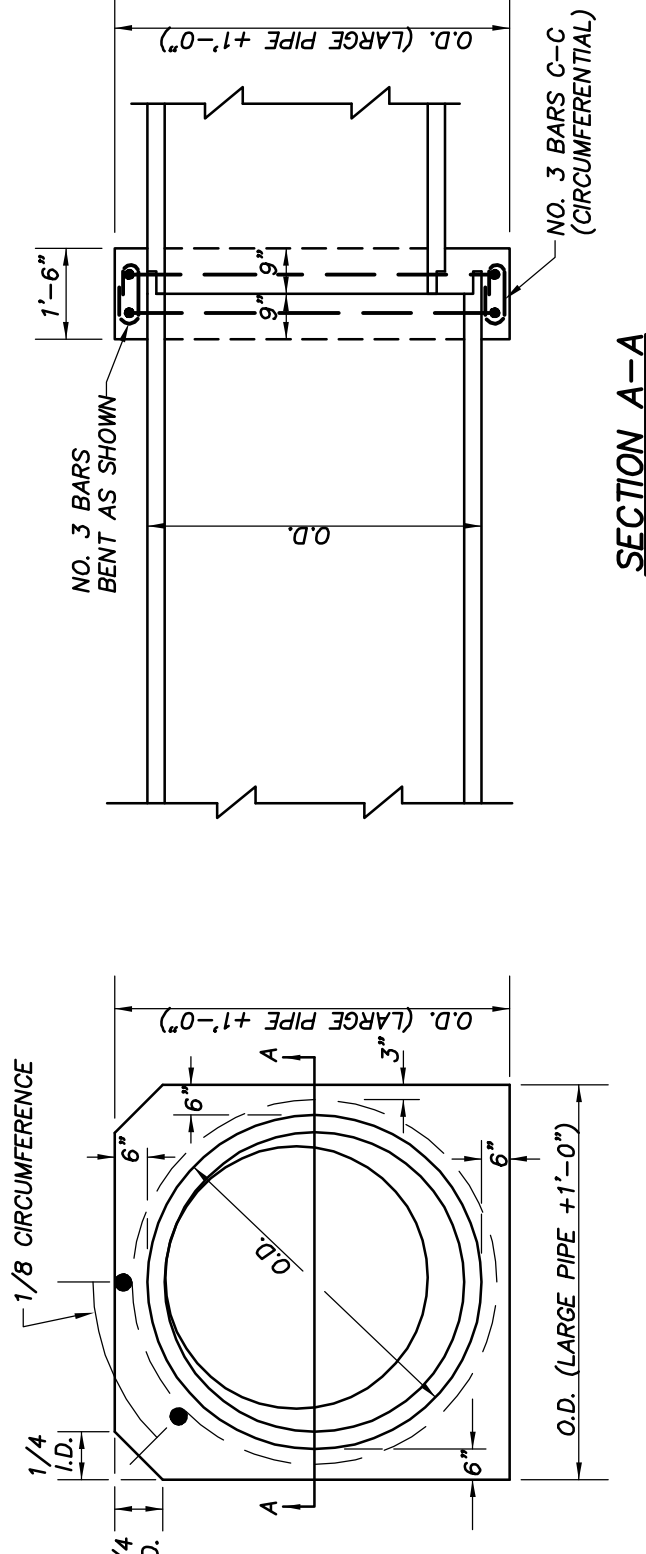
- CONSTRUCTION NOTES:
1. SEE PLAN - PROFILE SHEETS FOR TYPE, LOCATION, & ELEVATIONS OF CURB INLET.
 2. ALL CONSTRUCTION MATERIALS SHALL CONFORM TO THE STANDARD SPECIFICATIONS OF THE CITY OF HARKER HEIGHTS.
 3. THE MINIMUM CURB HEIGHT SHALL BE AS SHOWN ON THE PLANS & SHALL BE FROM THE CENTER OF THE OUTSIDE LAYER OF STEEL TO THE FACE OF CONCRETE.
 4. DIMENSIONS RELATING TO THE BENDING OF REINFORCING STEEL SHALL BE TO THE CENTER OF REINFORCING BARS.
 5. CENTERLINE REINFORCING BARS SHALL HAVE A MINIMUM 1 1/2" CLEARANCE FROM ALL FORMS OR 3" FROM EARTH.
 6. EXPOSED CORNERS OF CONCRETE SHALL BE TOoled TO 3/8" RADIUS UNLESS OTHERWISE SPECIFIED. ALL EXPOSED WALL SURFACES SHALL BE RUBBED TO A UNIFORM, FINISHED SURFACE.
 7. THE WIDTH, DEPTH AND LENGTH OF THE INLET BOXES ARE STANDARD DESIGNS AND SHALL BE AS SHOWN ON THE STANDARD DRAWINGS. ANY DEVIATION FROM THE STANDARD DIMENSIONS IN AND OUT OF THE BOXES, HOWEVER ANY DEVIATION FROM THE STANDARD DIMENSIONS SHALL BE APPROVED BY THE CITY ENGINEER PRIOR TO CONSTRUCTION.

STANDARD CURB INLET SECTIONS
NTS



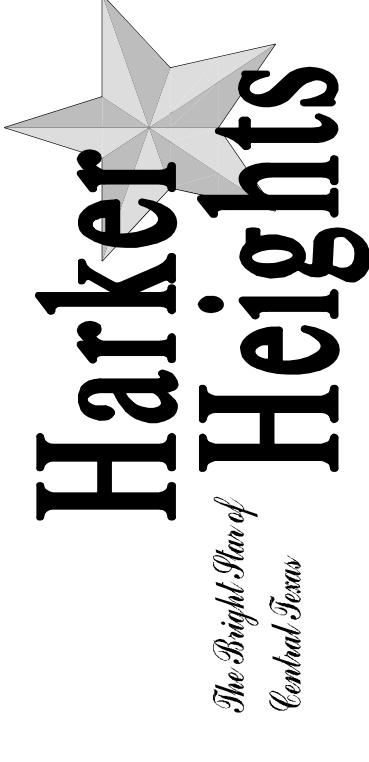
SECTION C-C
SHOWN FOR TYPE A INLET

SECTION A-A
TYPICAL FOR ALL TYPES



SECTION A-A

REINFORCED CONCRETE COLLAR DETAIL
NTS



DEPARTMENT OF PUBLIC WORKS

STORM SEWER DETAILS

ENGINEER:	SCALE:	DATE:	SHEET #
	N.T.S.	3/14/11	
	DRAWN BY:	CHECKED BY:	